

# la.venue



**at Terminal Stores**  
between 27th & 28th Street

# History

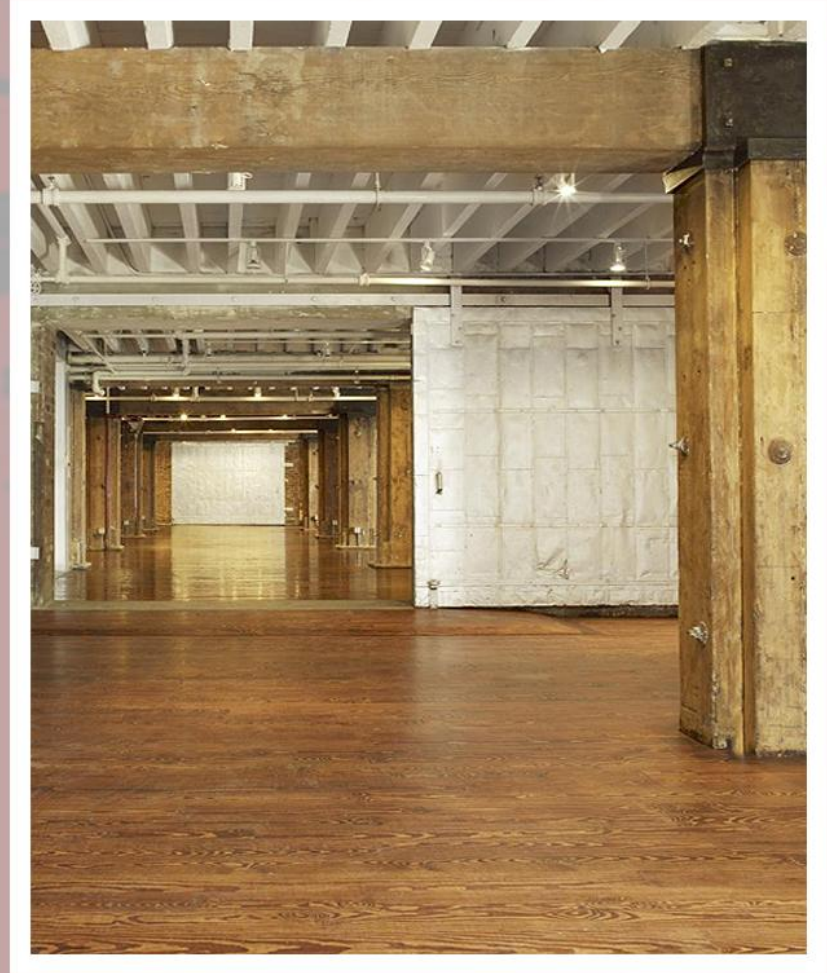
**la.venue**, one of the new and most exciting venue is located right inside the famous « The Terminal Stores » building, also known as The Waterfront or The Tunnel. Built in 1891, this brick building had direct railroad access from the Hudson River. Over the years this original and historic building has gone through major renovations to become one of the most avant-garde and trendy locations in the West Chelsea district.

Located just a few blocks from the Javits Center and the new Chelsea art galleries, **la.venue** is the perfect space for your trade shows, corporate functions, exhibitions, fashion shows, or simply your private receptions and cocktails.

la.venue

# The Space

la.venue's 18,500 square feet has been restored to its original architectural splendor in order to offer a unique and magical setting for all events. Designed with every modern amenity from prep-kitchen to electrical and Wi-Fi access. la.venue is committed to offering you exceptional service in Manhattan.



la.venue

Lot space comprised of four adjacent areas and lower level lounge, which can be used in its entirety or divided into private sections.

MAIN LEVEL:

LOFT AREA

Area # 4: 5500 SF

Area # 6: 7000 SF

Area # 8: 2500 SF

Area #10: 1500 SF

LOWER LEVEL:

LOUNGE: 1500 SF

\* Refer to floor plan for section numbers

CAPACITY:

Cocktail 1,100 GUESTS

Seated Dinner 600 GUESTS



la.venue

# Corporate Events



la.venue

# Social Events

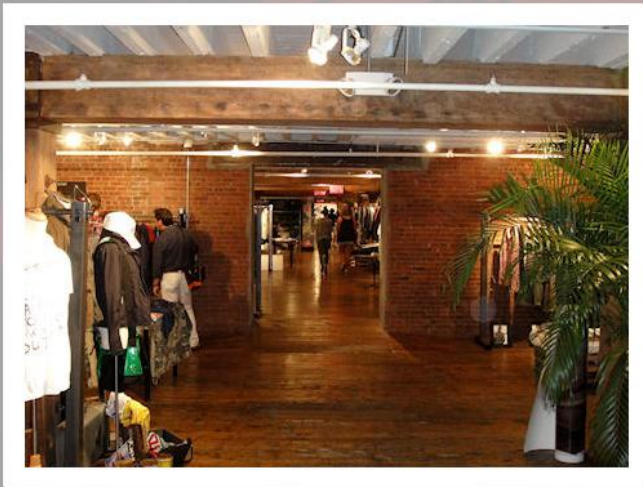


la.venue

# Art Exhibits



# Trade Shows



# Contact Us

**Waterfront New York**

224 12th Avenue

New York, NY 10001

**(Tel) 212-695-8090**

**(Fax) 212-629-8768**

**[www.lavenue-ny.com](http://www.lavenue-ny.com)**

**[events@tunnelevents.com](mailto:events@tunnelevents.com)**

la.venue